



**Park  
Thermal  
International (1996) Corporation**

62 Todd Road, Georgetown, Ontario L7G 4R7

Tel: (905) 877-5254 Fax: (905) 877-6205

Toll Free: (877) 834-4328

Email: [jmistry@parkthermal.com](mailto:jmistry@parkthermal.com)

[www.parkthermal.com](http://www.parkthermal.com)

**Equipment Description**

**Item # 4102**

**Manufacturer:** PARK THERMAL

**Type:** WASHER – APRAY-DUNK-AGITATE

**Serial:** 2232

**Load Dimensions:** 30” WIDE X 48” LONG X 30” HIGH

**Rated:** ELECTRIC, 40 KW, 58 AMPS

**Power:** 480 VOLTS, 3 PHASE, 60 HZ

**Control:** 120 VOLTS, 1 PHASE, 60 HZ

**Max. Temp.:** 190°F

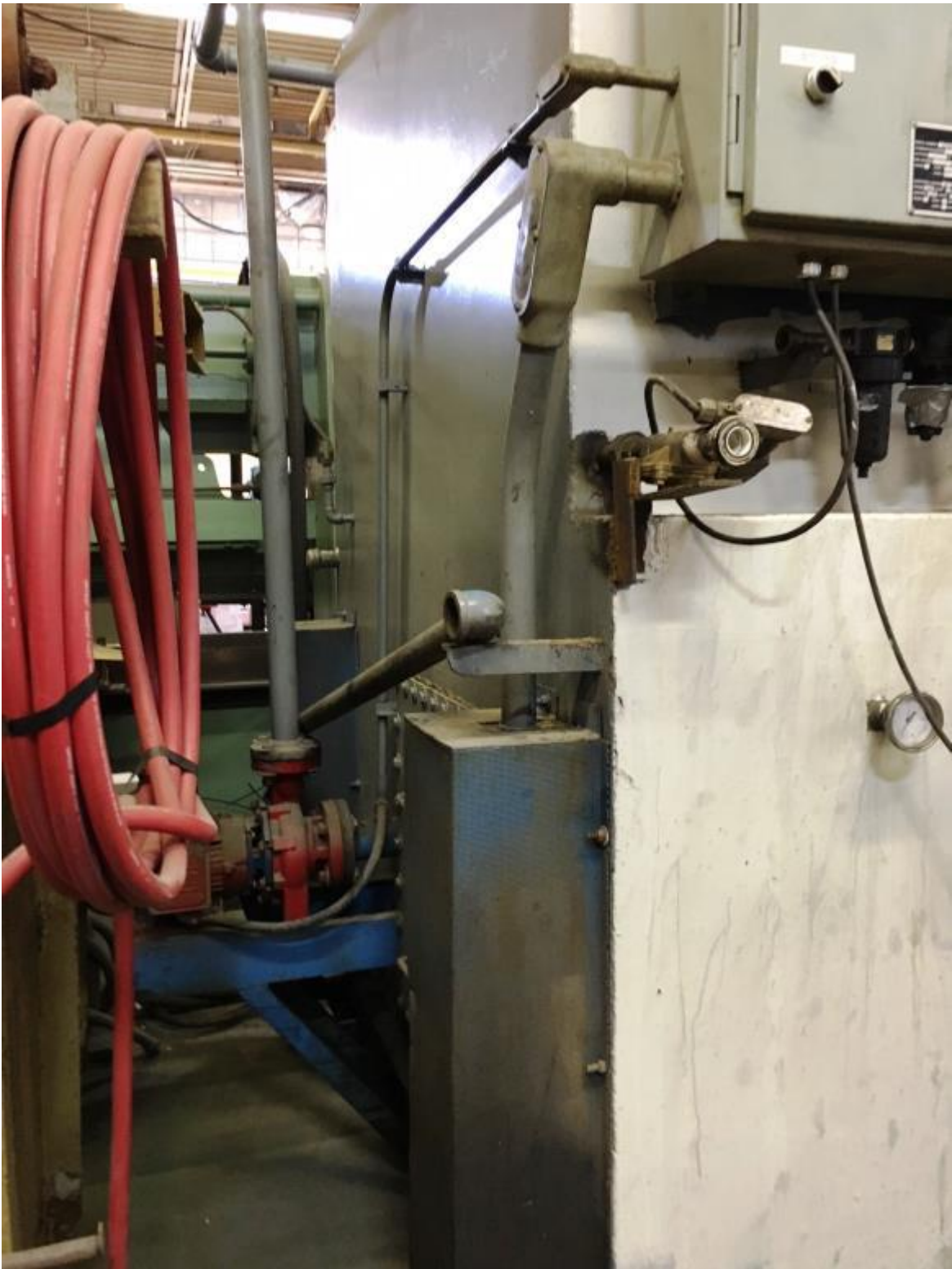
**General:** ABANAKI OIL SKIMMER MODEL 4, RE-CIRC. PUMP

**Controls:** AQUASTAT TEMP.CONTROL, ALLEN BRADLEY TIMING RELAY AND ALL NECESSARY CONTROLS.

NOTE: equipment is sold “AS IS, WHERE IS” and buyer shall indemnify seller against and hold seller harmless from any and all claims, actions and damages arising out of the possession, operation, condition or use of the equipment.

Seller suggests that you contact the manufacture for important information pertaining to safety and proper use and operation of the above equipment. For safety reasons, we request that you do not place the equipment into service until you have received current safety instructions from the manufacturer.







# PARK THERMAL

SERIAL NUMBER **2232** MAX TEMP **190** °F  
COMBUSTION RATING  BTU/HR FUEL  BTU/CF  
ALTITUDE  FT INLET PRESSURE  INCH WC  
MAX BURNER  FUEL IN WC MIN BURNER  FUEL IN W  
ZONES  ZONE 1  BTU/HR ZONE 2  BTU/HR  
ZONE 3  BTU/HR ZONE 4  BTU/HR  
ELECTRICAL RATING **40** KW/HR **58** AMPS  
POWER **480** VOLTS **3** PHASE **60** CYCLES  
CONTROL **120** VOLTS **1** PHASE **60** CYCLES  
ZONES  ZONE 1  KW ZONE 2  KW  
ZONE 3  KW ZONE 4  KW

